

Area of focus:

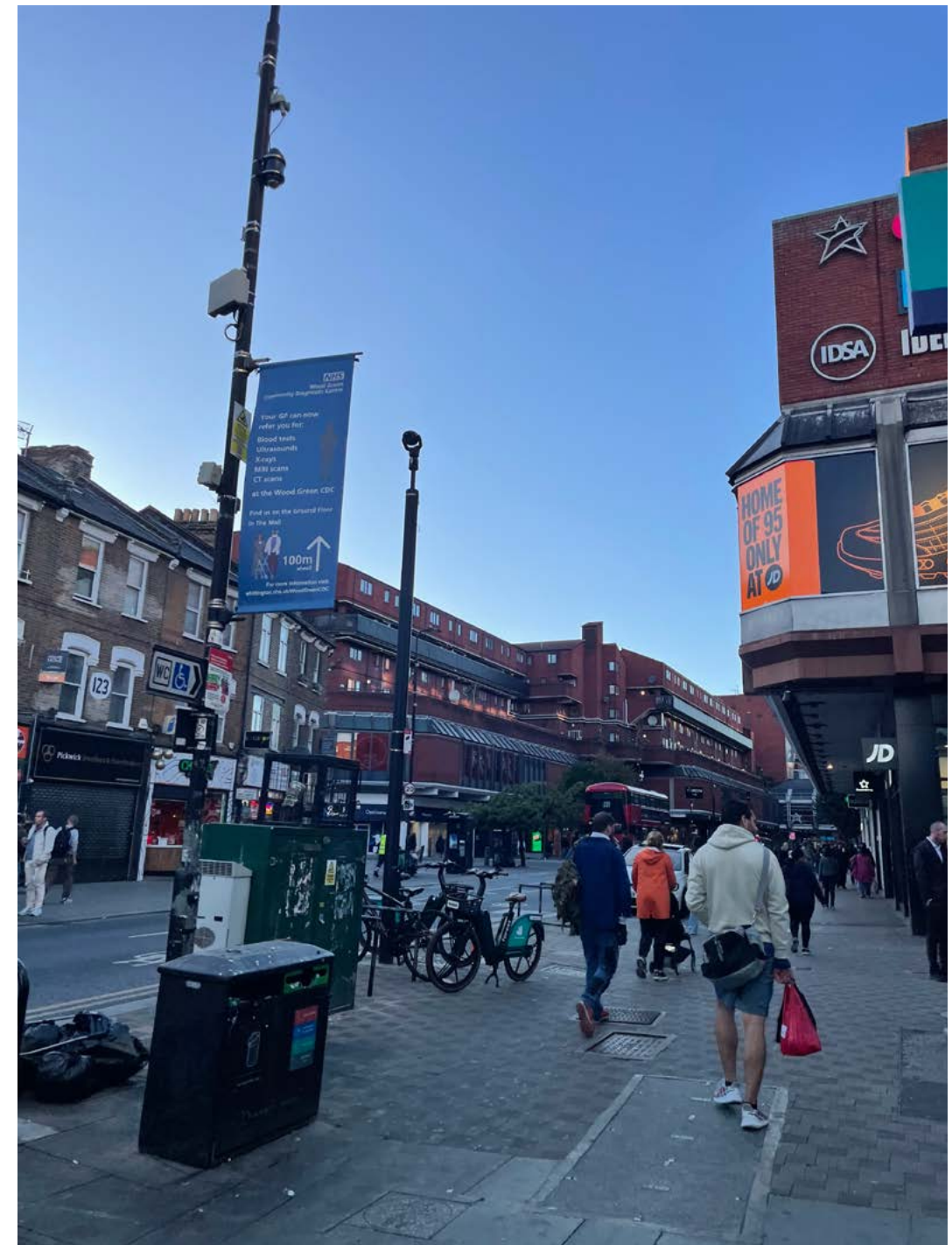
Wood Green High Road, between
Turnpike Lane and Wood Green
Underground stations.

Research via:

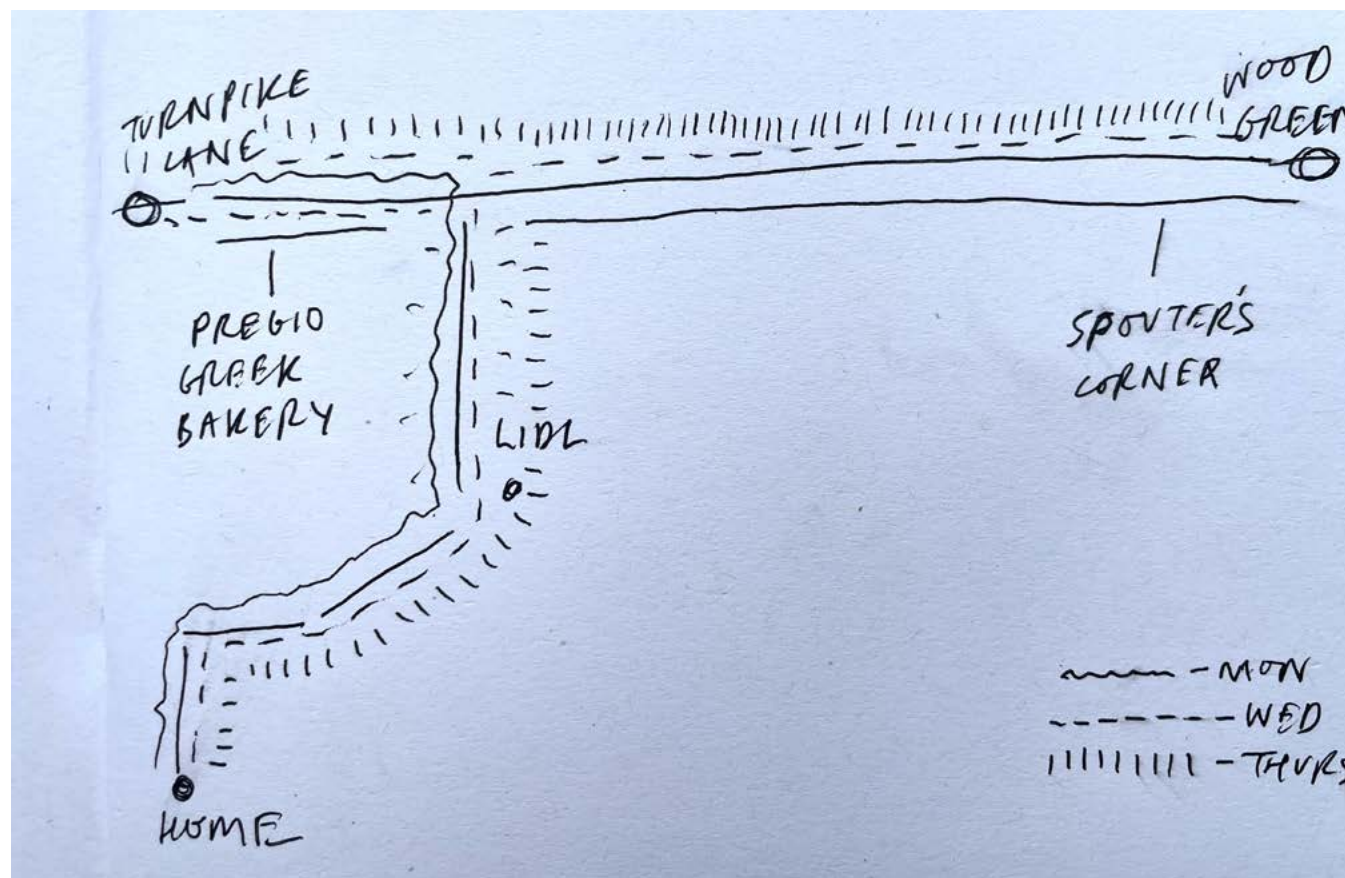
- hearsay/word of mouth
- walking
- observation

Experimentation via:

- note taking
- photographing
- sketching



- I moved to Wood Green on the 10th September from Liverpool, UK
- I'd heard a mixture of positive and negative opinions about the place before moving. I was told that it was one of the most densely populated high streets and traffic locations in London (?)
- I had two negative experiences on my first day that made a strong impression. This made me more curious about the area as somewhere to learn more about. I thought this would be a good location for this project as I walk down the high street every day
- After reading the text, "Species of Spaces", I decided to try out some of the practical exercises laid out in the chapter, and to visit a few locations on the high street to people watch.
- In the text, he describes "You must set about it more slowly, almost stupidly". I decided I would try and experience the street as if i'd not seen anything before and try to take in the detail.



Monday, after receiving the brief, I walked home from Turnpike Lane with the brief in mind and took some photos, trying to get a sense for what the visuals of the high street say about the place.

I feel this end of the street has majority independent shops with a real DIY spirit. Messages shout out to you from the windows. There's a mix of cafes, home furnishing stores and betting shops.



Wednesday, I took the approach laid out in Species and spaces. I walked from my house to Turnpike Lane, and then to Wood Green station, stopping off at the local Wetherspoons, "Spouter's Corner" to people watch and write. Throughout the walk I observed and took photos of anything that seemed important. While in the pub, I wrote down my observations.



Murals painted on walls in otherwise quite unpleasant parts of the road to brighten the space



Luxury items in shops that are closing down



People seem to prefer the fruit and veg market to local supermarkets, which creates a very social atmosphere on the street



I noticed a constant along the whole high street were these stickers advertising local businesses. They could be thought of as graffiti, but visually they become like a continuous noticeboard. The repeated graphics and colours become almost a theme on the street, orienting you along the way.



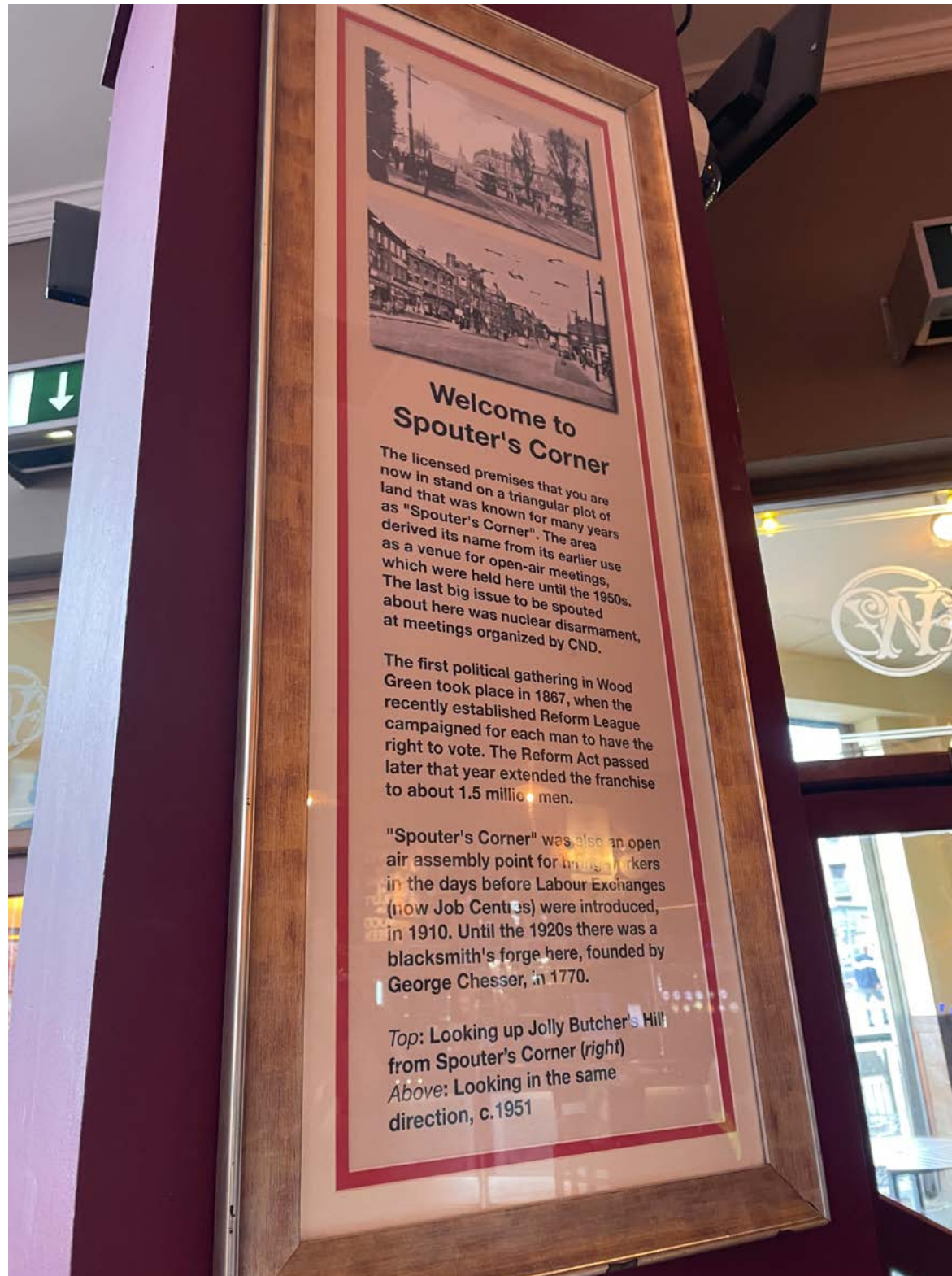
Spouter's Corner, the local Wetherspoons, dominates the street corner and is always busy each time I pass it



- Council provided map highlights the local Morrisons and Shopping City Mall, but no local businesses.
- It was interesting to see a map as I was actively avoiding looking at Google Maps or looking the road up online
- The further towards Wood Green station you go, the more commercial the shops become
- At this particular portion of the road, the architecture and concrete overpass make the space very claustrophobic and closed in



Wall decorations inside Spouter's Corner evoke ancient water gathering in a place that looks vaguely African? Featuring palm trees and antelope. I think this is an interesting choice to represent the local pub as a sort of local watering hole.



Left - Spouter's Corner is a historical site where since the 1700s unions have organised and political issues were discussed as a community. This framed image describes the history.

Right - The bespoke carpet of Spouter's Corner. Every Wetherspoons has it's own carpet.



Right - Message in the toilet to inform there is CCTV for your safety.



On Thursday I followed the same route as the day previous, stopping off at a different spot, a Greek bakery, to sit and observe and write. This was different than the day before as I could see the street where I was sitting, unlike Wetherspoons where I was restricted to the inside. I walked again to Wood Green and then back home, photographing anything of note.

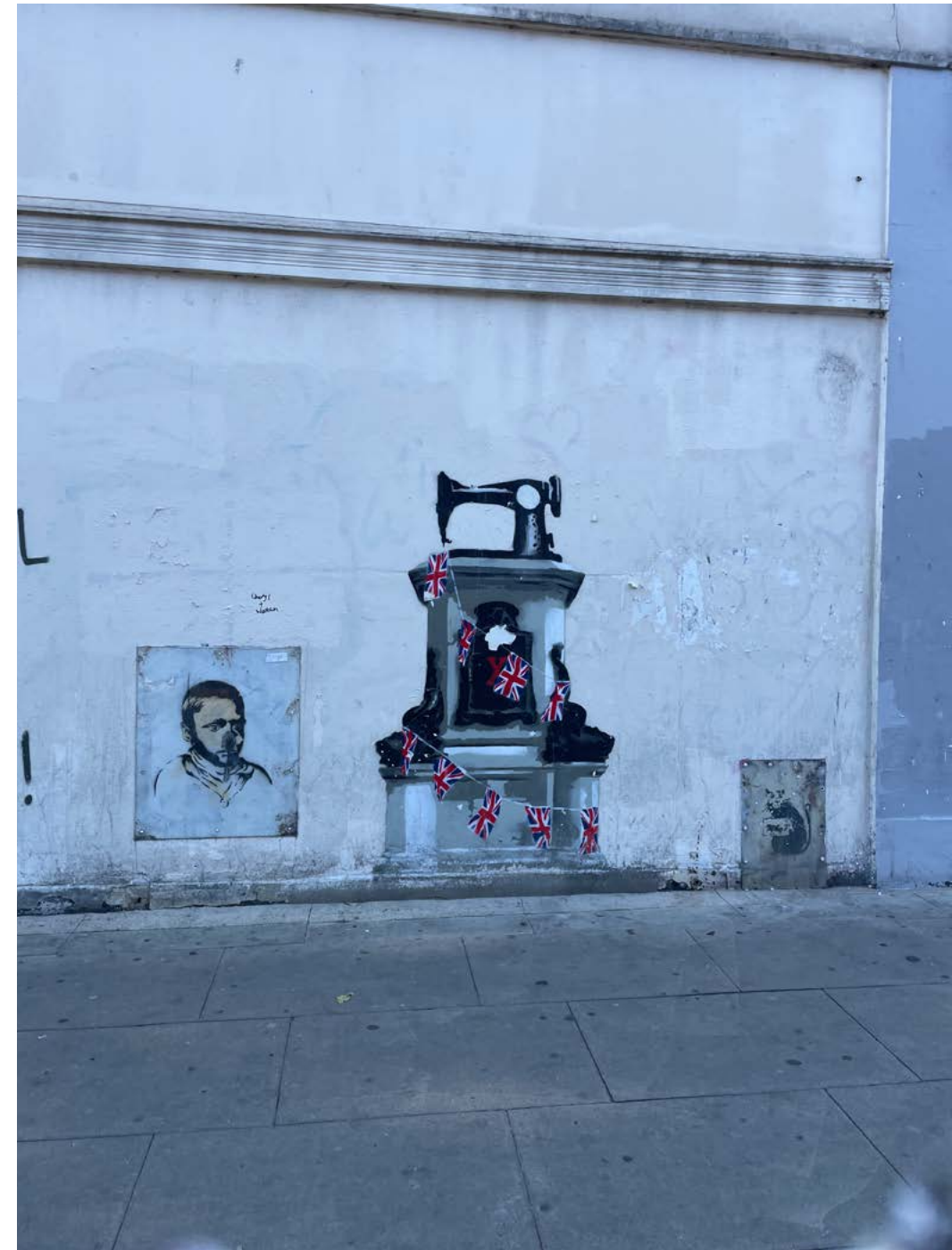


I noticed places to sit and pass the time were unusual along the street. While there were some benches in some populated spots, there were also a few seats for one person, often not in ideal spaces (busy spots) or transient spaces where people would pass through off the main road. Maybe this was to invite people to occupy these areas? There were also spaces that maybe you wouldn't notice in passing (centre image) which had been inhabited.



At times, I was struck by the beauty of everyday items and how they were arranged in the stores

Sarah Weights



I believe there was a Banksy in this spot that the council campaigned to return to the area after it was sold